



Questions? Contact:

**Carol Enns**

Professor of Psychology  
319-895-4351  
Law Hall 106D  
cenns@cornellcollege.edu

**Erin Davis**

Professor of Sociology  
319-895-4296  
College Hall 209  
edavis@cornellcollege.edu

**Amanda Ross**

Office of International &  
Off-Campus Studies  
319-895-4385  
College Hall 112  
aross@cornellcollege.edu



**Essential Japanese—English**

Yokoso!	Welcome!
Konnichiwa.	Hello!
Onegai shimasu.	Please.
Domo arigato.	Thank you.
Sumimasen.	Excuse me.
Wakarimasen.	I don't understand.
Toire wa doko desu ka?	Where is the bathroom?
Ittekimasu!	Goodbye!

**PUT CULTURE**



**INTO CONTEXT**



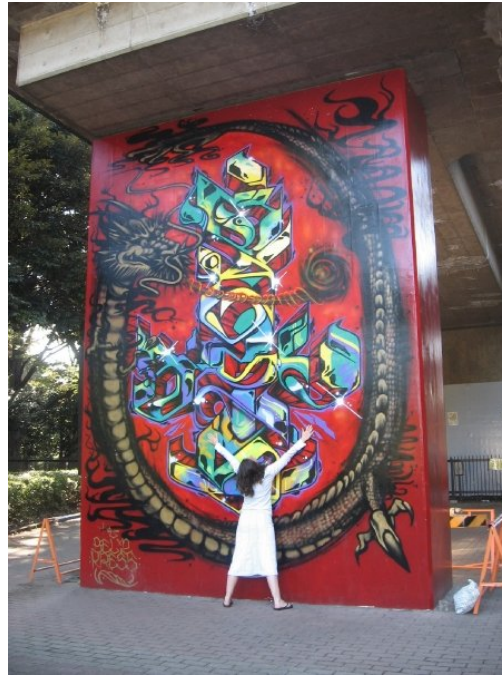
SOC 256/PSY 261

Term 7 2009-10

# Culture, Gender, and Public Policy in Japan (Tokyo, Kyoto & Osaka)

## Course Goals:

- > **Examine** the interconnections between Japanese cultural traditions, gender roles, and contemporary public policy.
- > **Visit** historical, cultural, educational, employment, and religious settings in order to gain a foundation for understanding Japanese traditions, values, and everyday life.
- > **Explore** contemporary culture by observing and interacting with Japanese citizens and hearing from guest lecturers.
- > **Orientate** yourself to enduring historical and cultural foundations that inform contemporary life in Japan
- > **Experience** a broad introduction to Japanese culture, with special emphasis on gender and public policy.



## Potential Topic Areas:

Gender and employment patterns  
Work and family life balance  
Education  
Sexuality  
Reproductive and fertility concerns  
Gender and interpersonal violence  
Developmental and aging issues  
Immigration and human rights issues  
Popular culture, and current challenges faced by young adults in Japan.

## LOGISTICS

### **Prerequisites:**

Permission of instructor and one of the following: PSY 161, SOC 101, WST 171, or EST 123.

### **Cost:**

This course will entail additional cost, estimated at \$3200. Course fee will include airfare, rail passes, accommodations, meal stipend, excursions and speakers. Students will be responsible for transportation within the cities and some meals.

